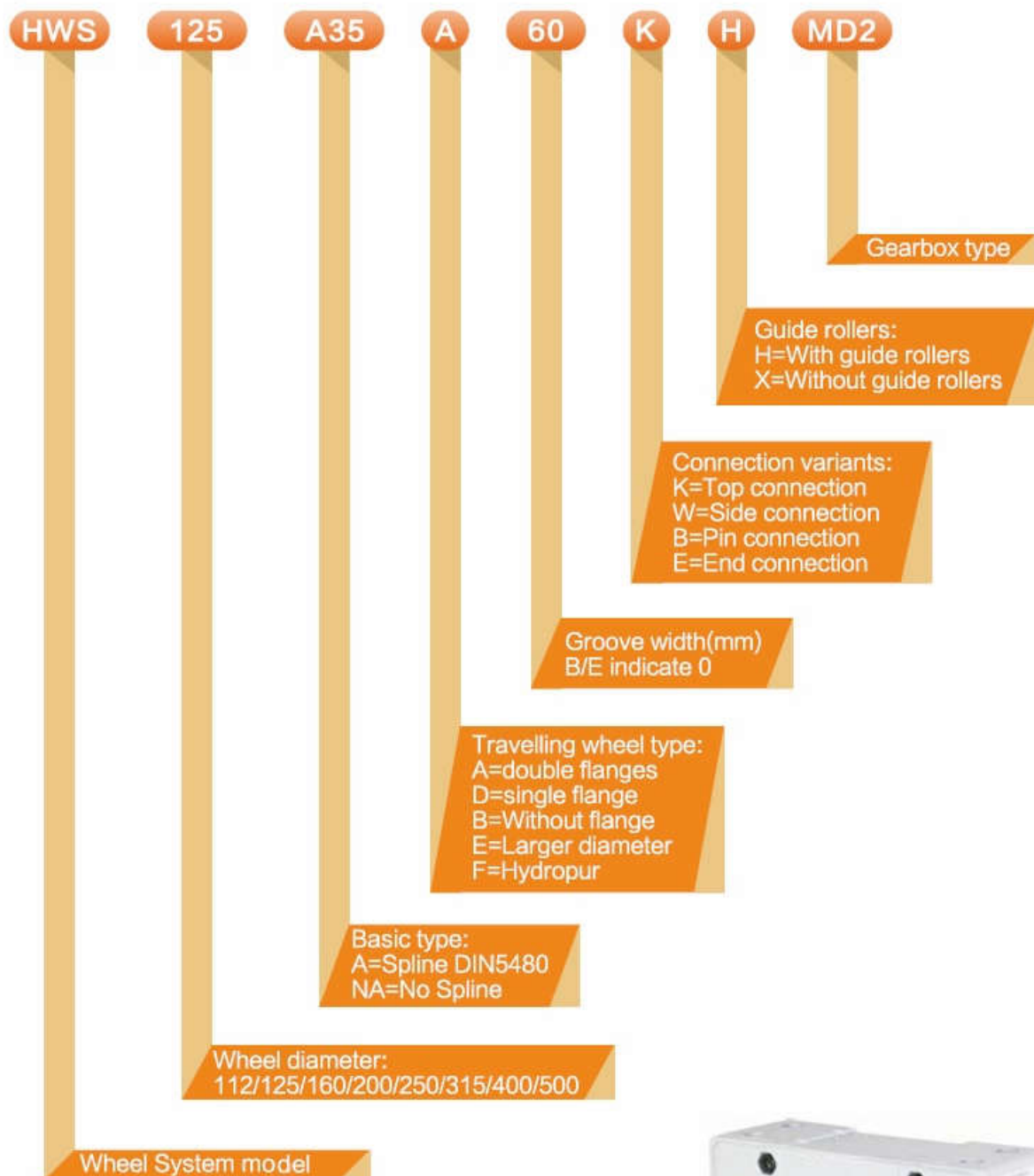
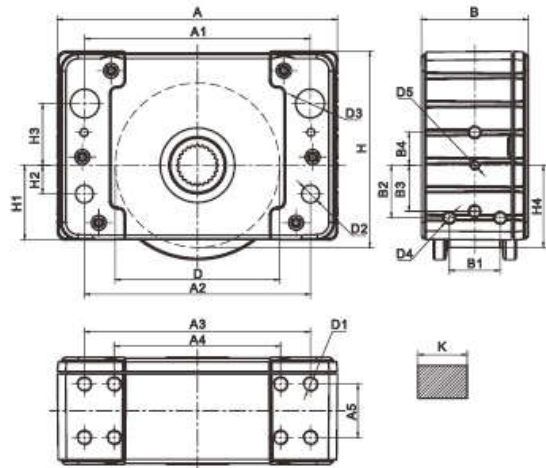


HWS Wheel Block



[Light Modular
More Efficient]

HWS Wheel Block



Technical Parameters

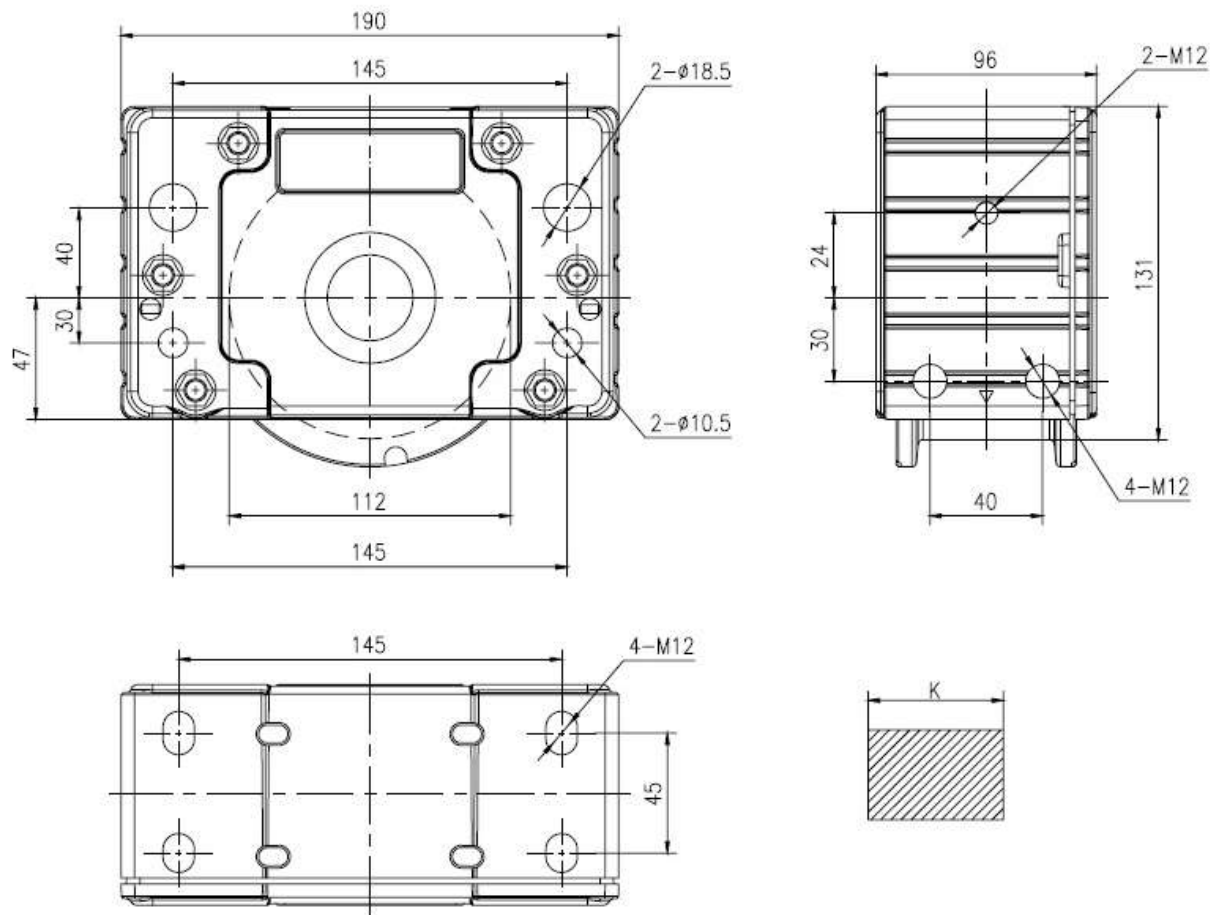
Type D	A mm	B mm	H mm	K mm	H1 mm	H2 mm	H3 mm	H4 mm	B1 mm	B2 mm	B3 mm	B4 mm
HWS112	190	96	131	55	47	30	40	80	40	30	-	24
HWS125	220	98	147.5	55	53.5	20	40	100	50	37	-	37.5
HWS160	275	110	187	60	70	25	55	100	54	47.5	-	20
HWS200	340	130	238	60	90	35	75	100	62	64	56	40
HWS250	385	150	281	75	89	50	80	100	-	-	-	-
HWS315	470	180	349.5	90	114	70	80	100	-	-	-	30
HWS400	580	210	440	-	144	95	130	100	-	-	-	30
HWS500	700	240	566	-	183	110	160	100	-	-	-	30

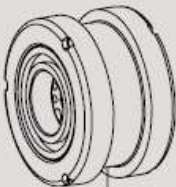
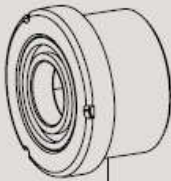

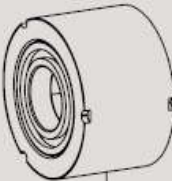

Type D	A1 mm	A2 mm	A3 mm	A4 mm	A5 mm	D1	D2 mm	D3 mm	D4	D5	Weight kg	Max.Load kN
HWS112	145	145	145	-	45	4xM12	10.5	18.5	4xM12	2xM12	10	27.5
HWS125	175	175	170	-	55	4xM12	13	21	4xM12	2xM12	15	50
HWS160	220	220	220	-	55	4xM16	17	30	4xM16	2xM12	26	70
HWS200	275	275	275	-	65	4xM16	20	35	8xM16	2xM12	41	100
HWS250	310	310	290	140	80	8xM16	34F8	40	2xM12	-	70	160
HWS315	370	370	360	180	100	8xM16	40F8	50	2xM12	2xM20	130	220
HWS400	450	450	440	210	120	8xM20	31H13	65	2xM12	2xM20	220	300
HWS500	580	580	620	480	125	8xM20	31H13	70	2xM12	2xM20	380	400

Application case



HWS Wheel Block 112

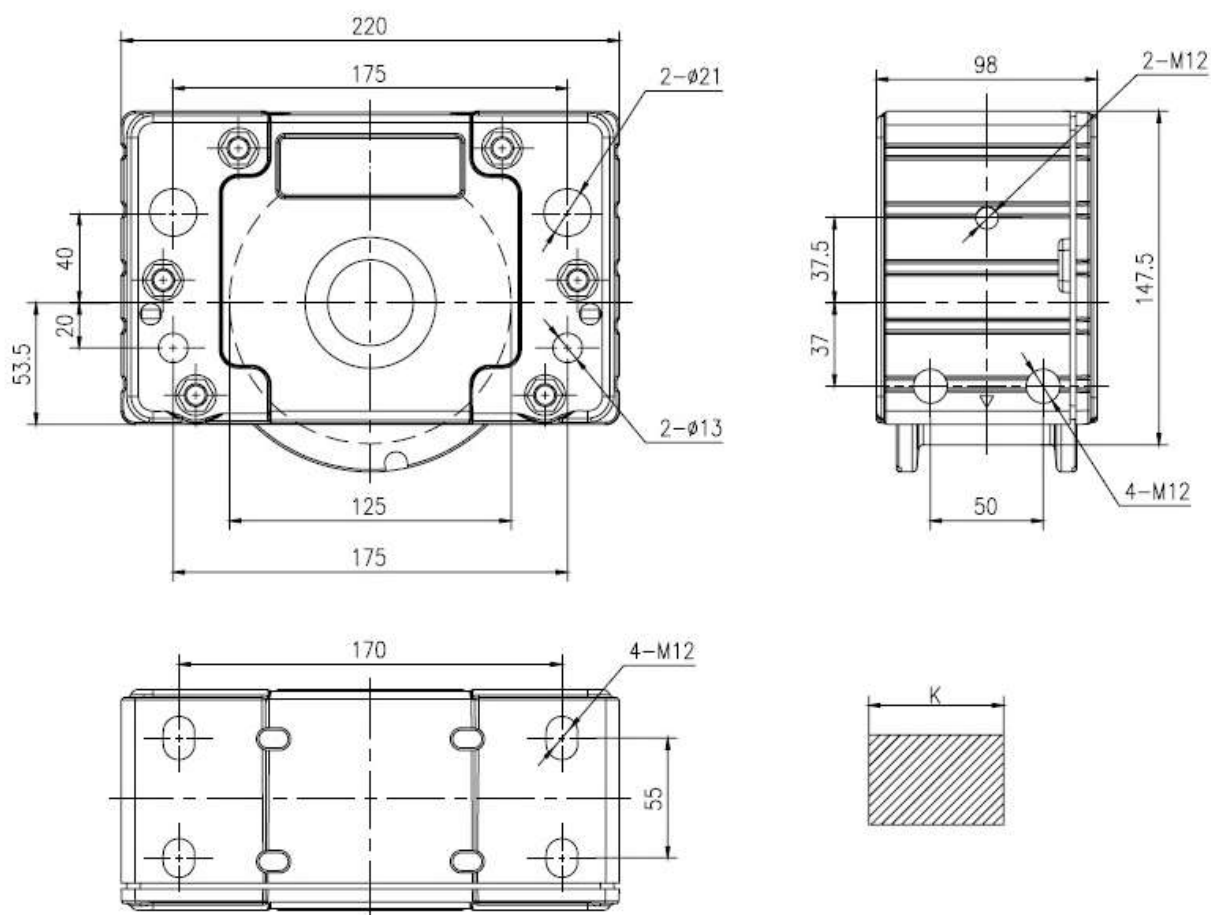


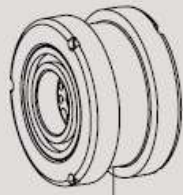
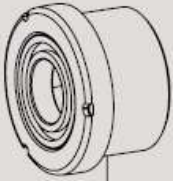
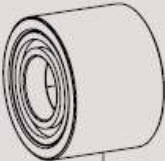


Type A	Type D	Type B	Type E	Type F
				
Double flange	Single flange	Without flange	Larger diameter	Hydropur
① 12.12.201	12.12.204	12.12.202	12.12.205	12.12.206
② 12.12.207	12.12.210	12.12.208	12.12.211	12.12.212

① Wheel block driven

② Wheel block non driven

HWS Wheel Block 125

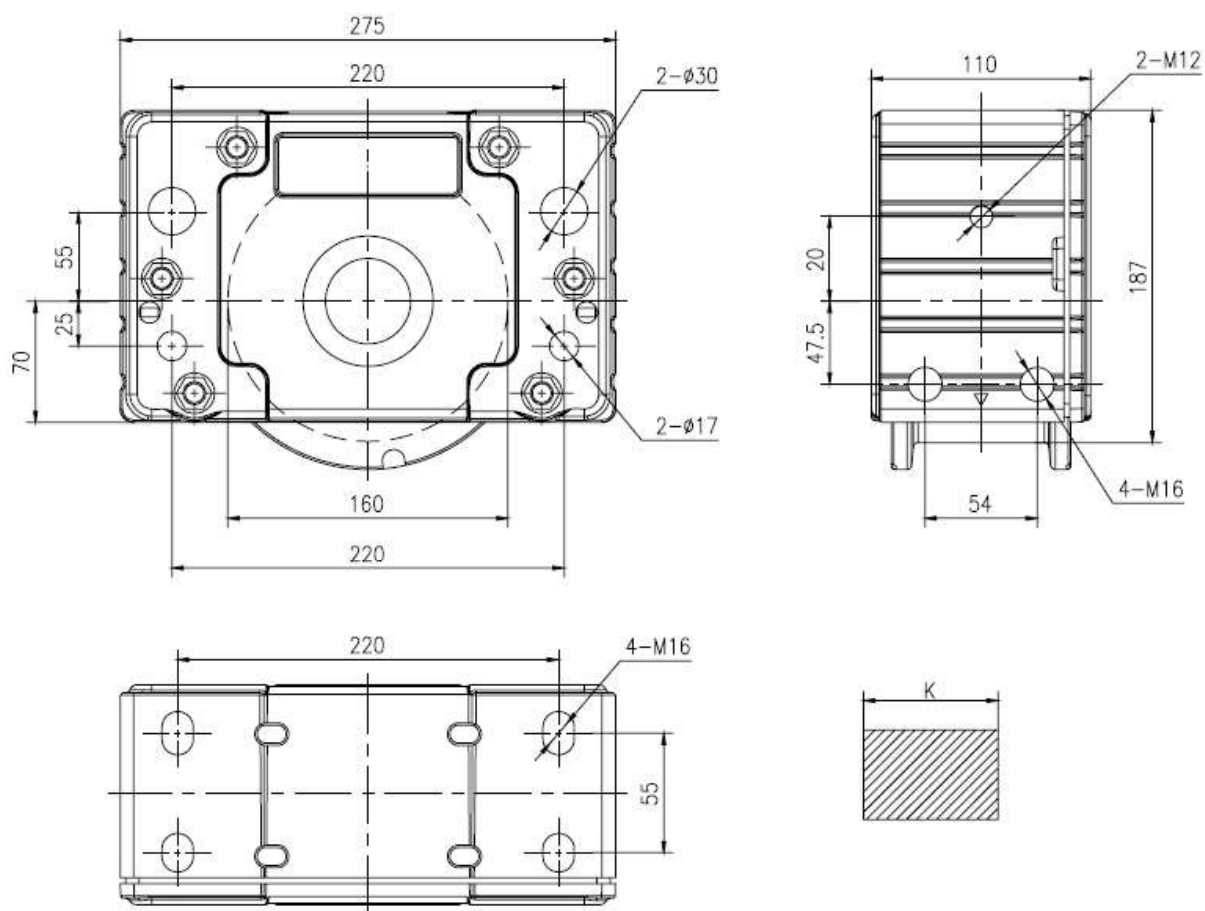


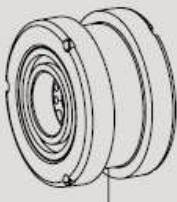

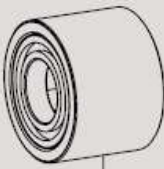
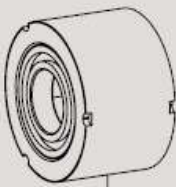

Type A	Type D	Type B	Type E	Type F
				
Double flange	Single flange	Without flange	Larger diameter	Hydropur
① 12.13.201	12.13.204	12.13.202	12.13.205	12.13.206
② 12.13.207	12.13.210	12.13.208	12.13.211	12.13.212

① Wheel block driven

② Wheel block non driven

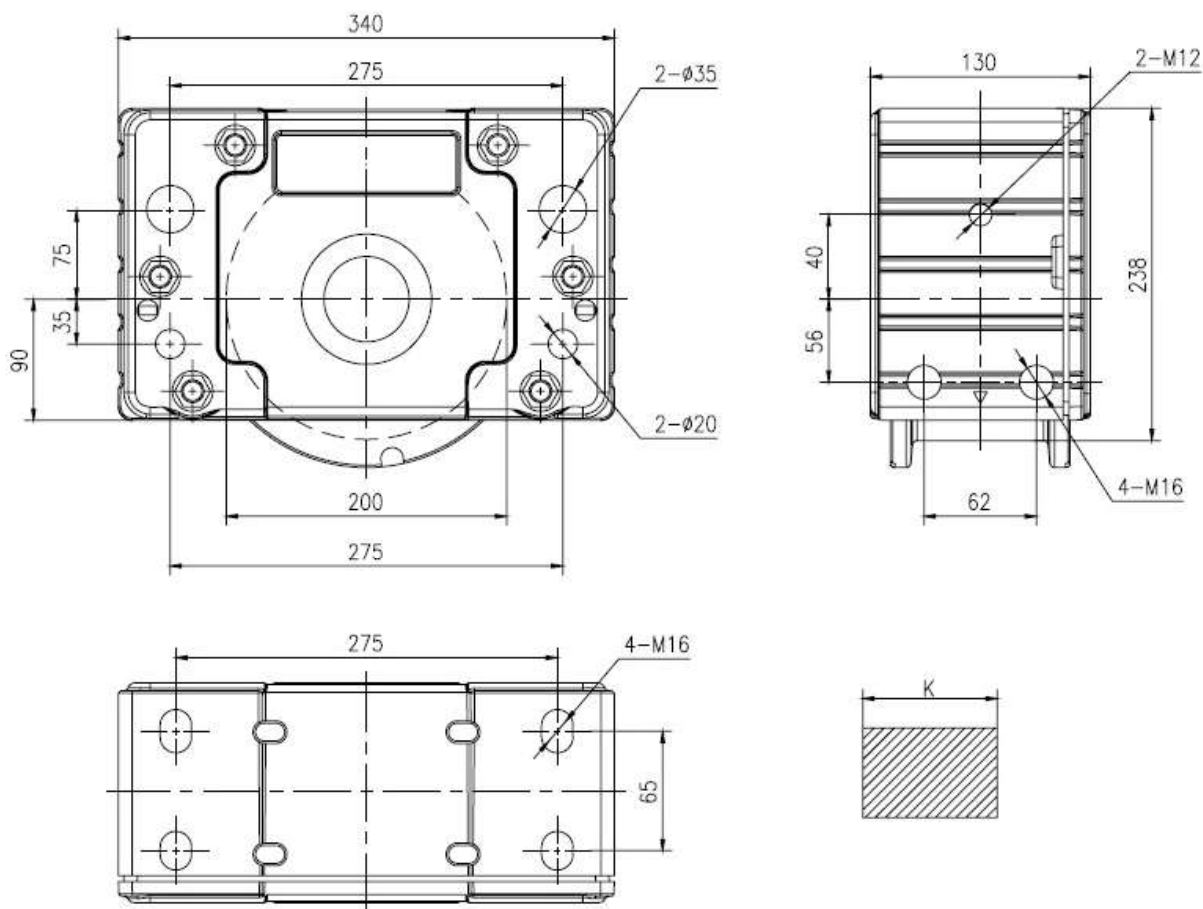
HWS Wheel Block 160

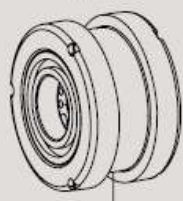
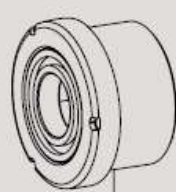
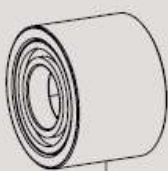
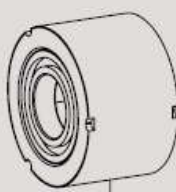



Type A	Type D	Type B	Type E	Type F
				
Double flange	Single flange	Without flange	Larger diameter	Hydropur
① 12.14.201	12.14.204	12.14.202	12.14.205	12.14.206
② 12.14.207	12.14.210	12.14.208	12.14.211	12.14.212

① Wheel block driven ② Wheel block non driven

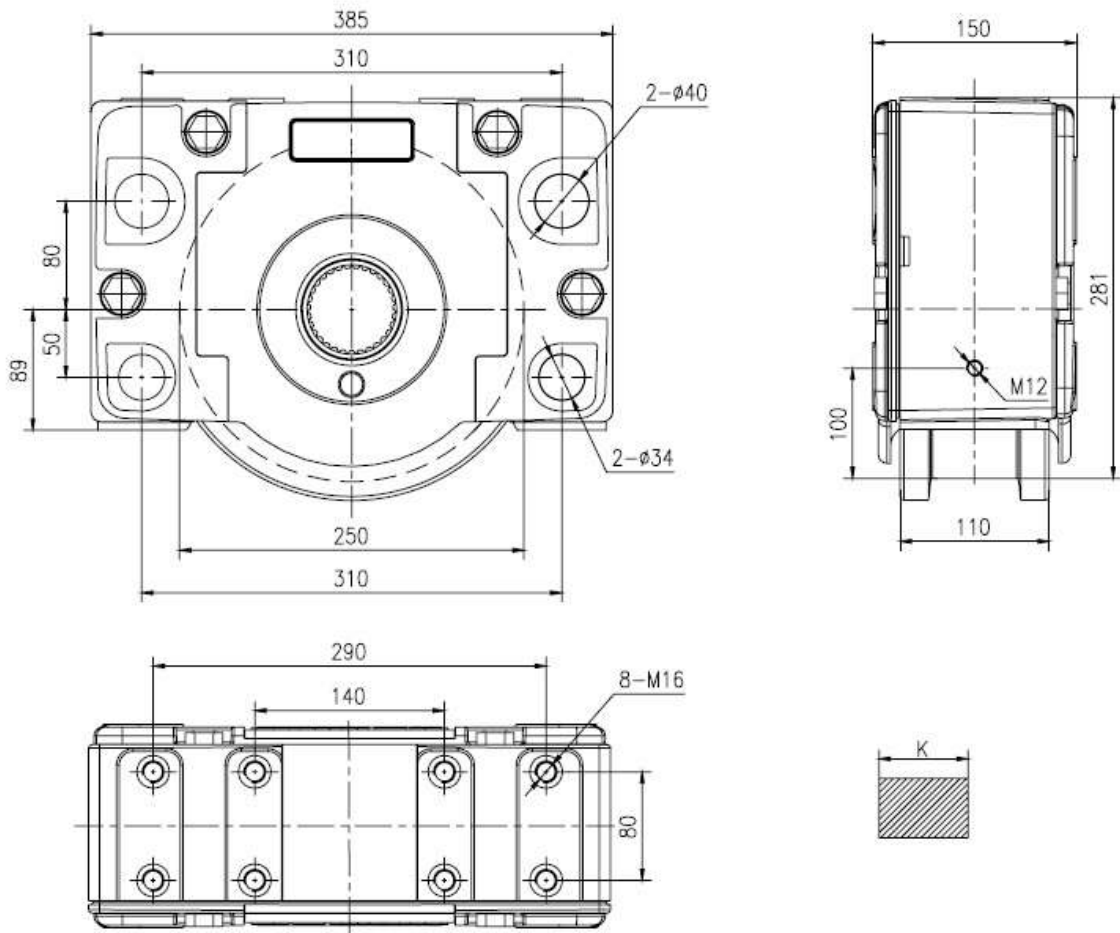
HWS Wheel Block 200



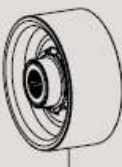
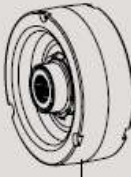


Type A	Type D	Type B	Type E	Type F
				
Double flange	Single flange	Without flange	Larger diameter	Hydropur
① 12.15.201	12.15.204	12.15.202	12.15.205	12.15.206
② 12.15.207	12.15.210	12.15.208	12.15.211	12.15.212

① Wheel block driven ② Wheel block non driven

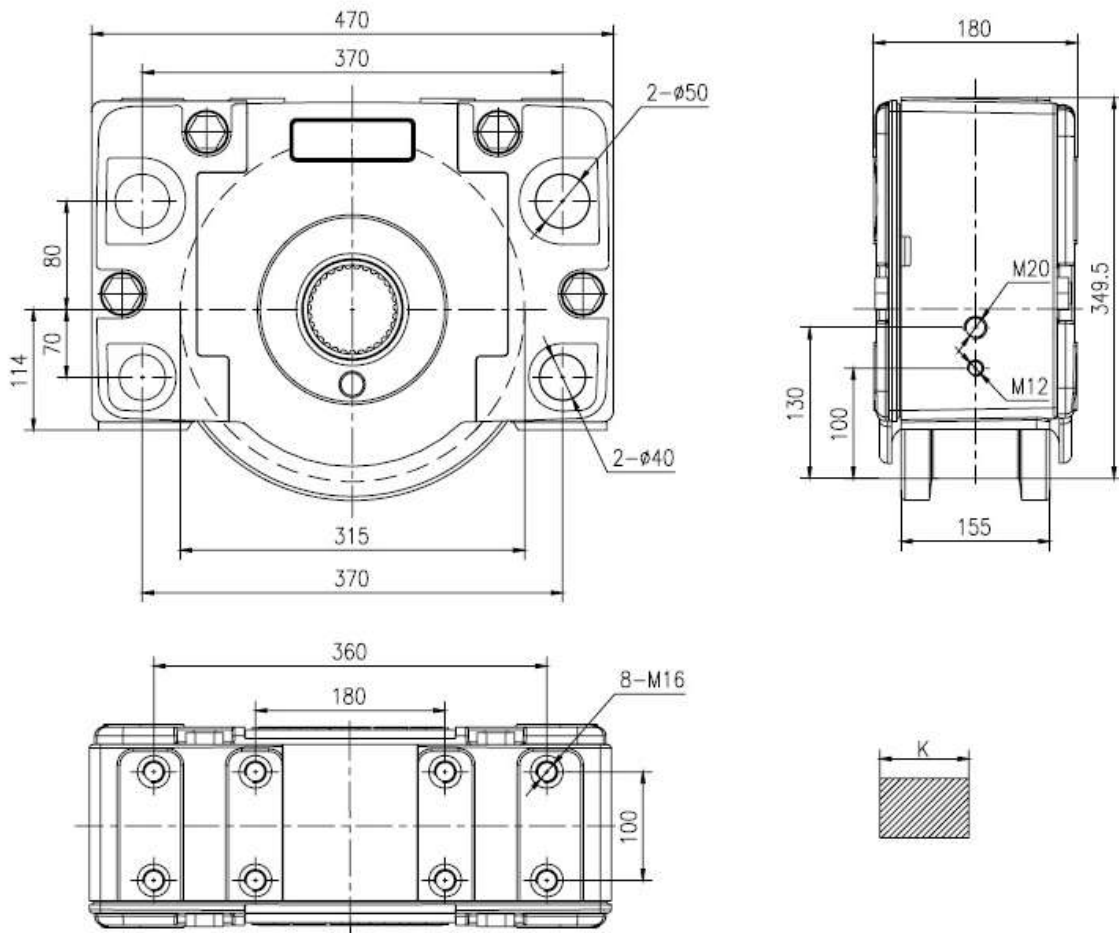
HWS Wheel Block 250


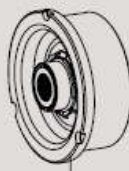
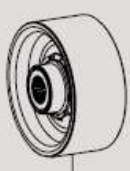



Type A	Type D	Type B	Type E
			
Double flange	Single flange	Without flange	Larger diameter
① 12.16.201	12.16.204	12.16.202	12.16.205
② 12.16.207	12.16.210	12.16.208	12.16.211

① Wheel block driven ② Wheel block non driven

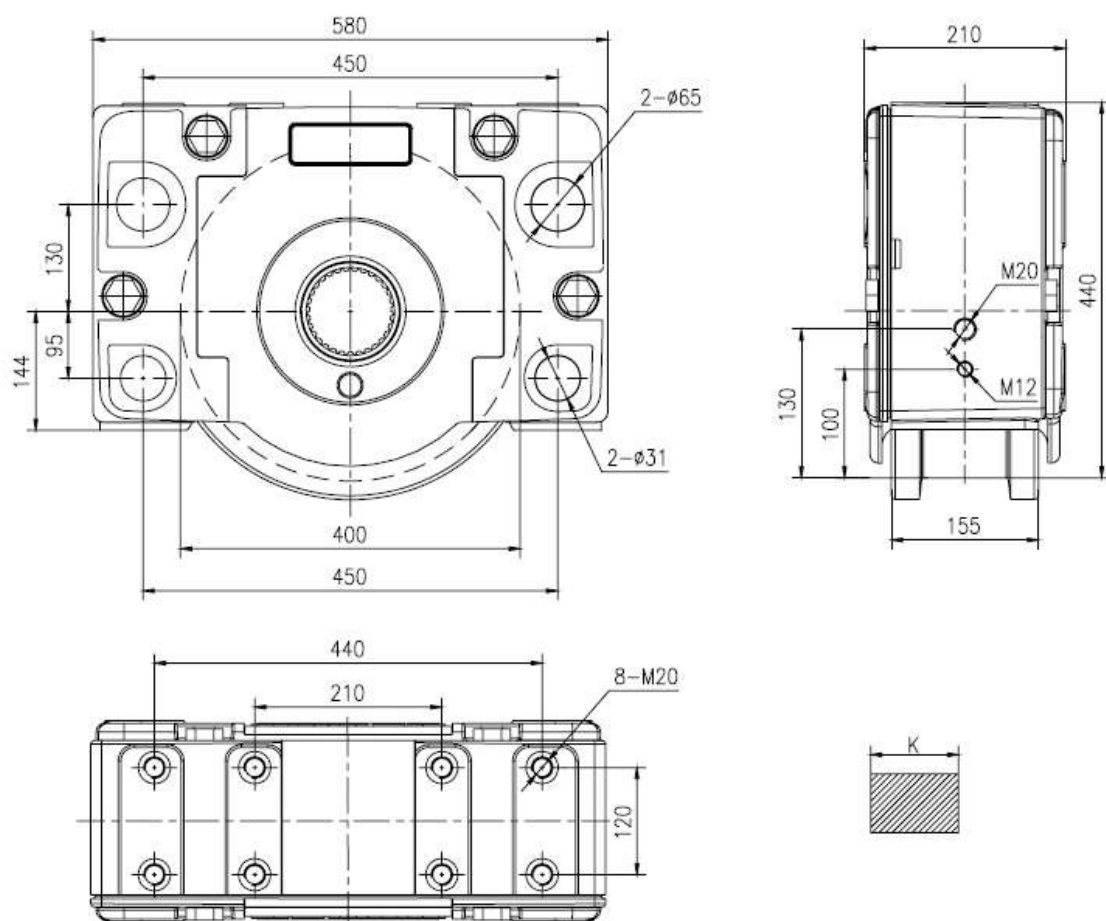
HWS Wheel Block 315

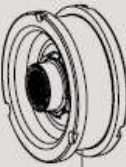
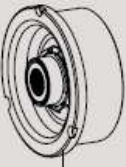
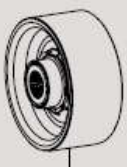
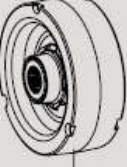


Type A	Type D	Type B	Type E
			
Double flange	Single flange	Without flange	Larger diameter
① 12.17.201	12.17.204	12.17.202	12.17.205
② 12.17.207	12.17.210	12.17.208	12.17.211

① Wheel block driven ② Wheel block non driven

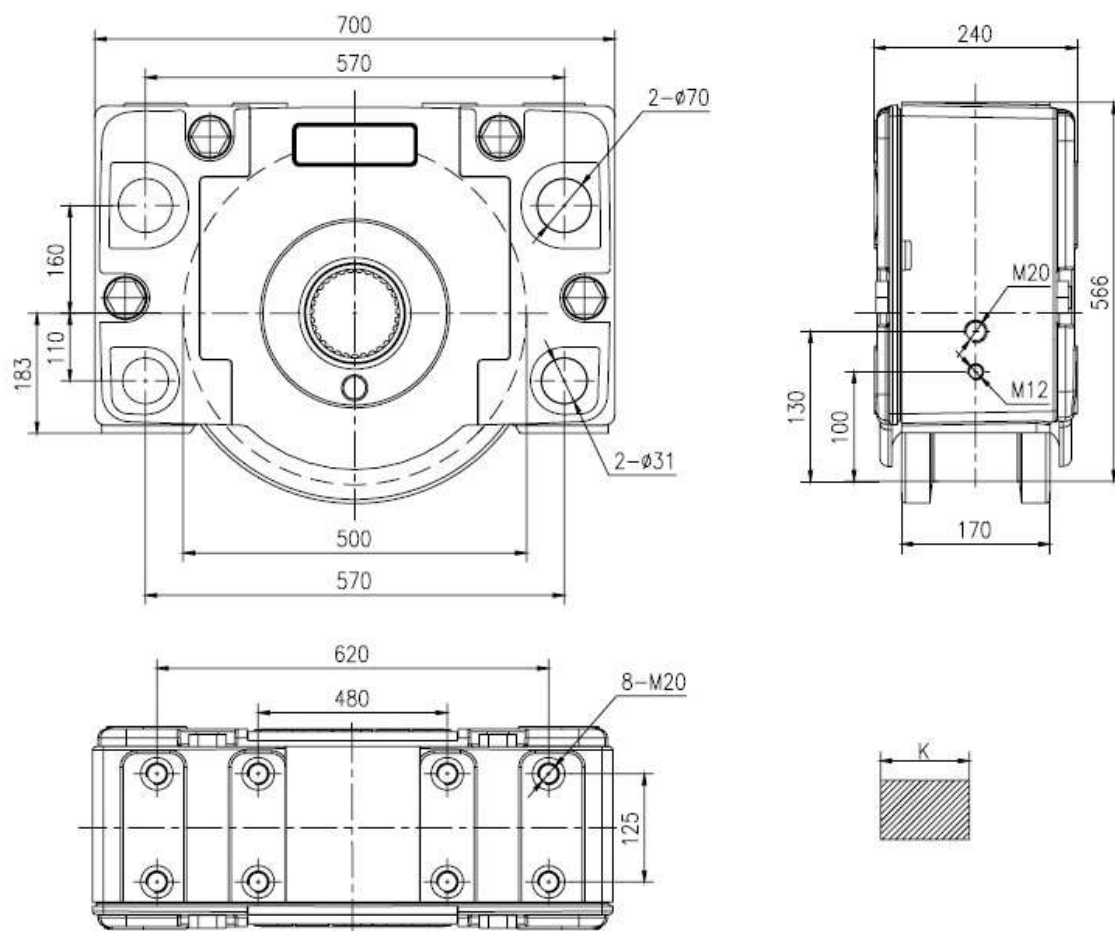
HWS Wheel Block 400


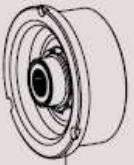
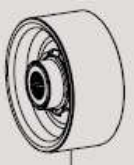
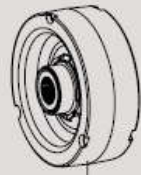


Type A	Type D	Type B	Type E
			
Double flange	Single flange	Without flange	Larger diameter
① 12.18.201	12.18.204	12.18.202	12.18.205
② 12.18.207	12.18.210	12.18.208	12.18.211

① Wheel block driven ② Wheel block non driven

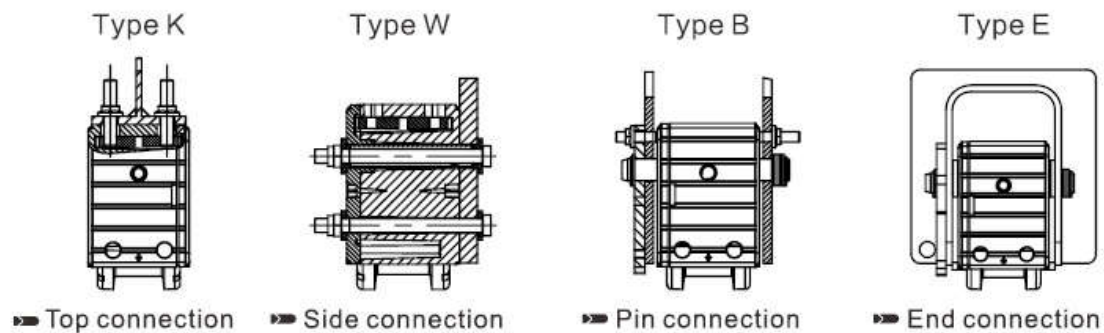
HWS Wheel Block 500



Type A	Type D	Type B	Type E
			
Double flange	Single flange	Without flange	Larger diameter
① 12.19.201	12.19.204	12.19.202	12.19.205
② 12.19.207	12.19.210	12.19.208	12.19.211

① Wheel block driven ② Wheel block non driven

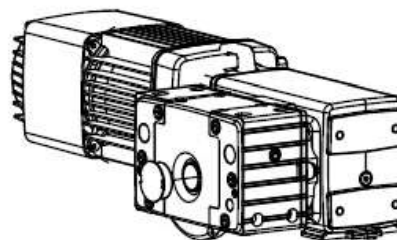
Connection variants



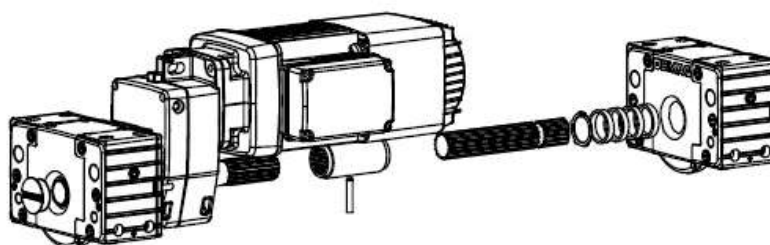
Motor installation



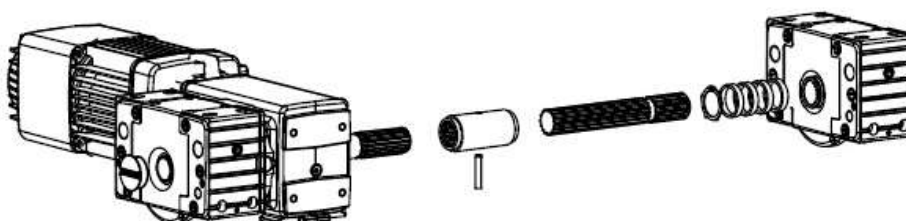
Offset geared motors



Angular geared motors



Central drive unit

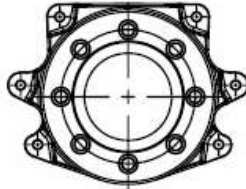


Central drive unit

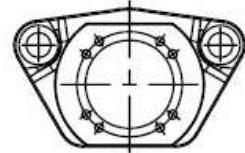
HWS wheel block accessories



Buffer



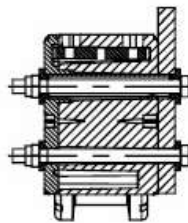
Torque bracket
HWS112-HWS200



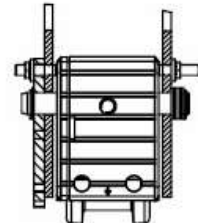
Torque bracket
HWS250-HWS500



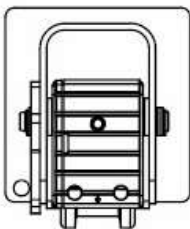
Top connection



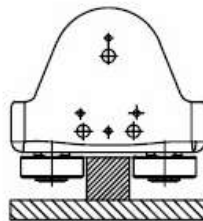
Side connection



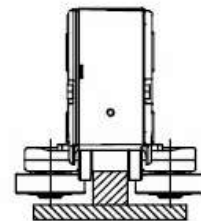
Pin connection



End connection

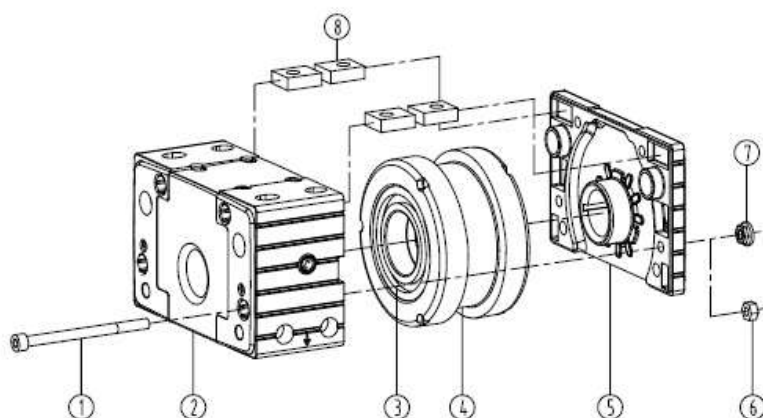


Guide rollers/fittings
HWS112-HWS200



Guide rollers/fittings
HWS250-HWS500

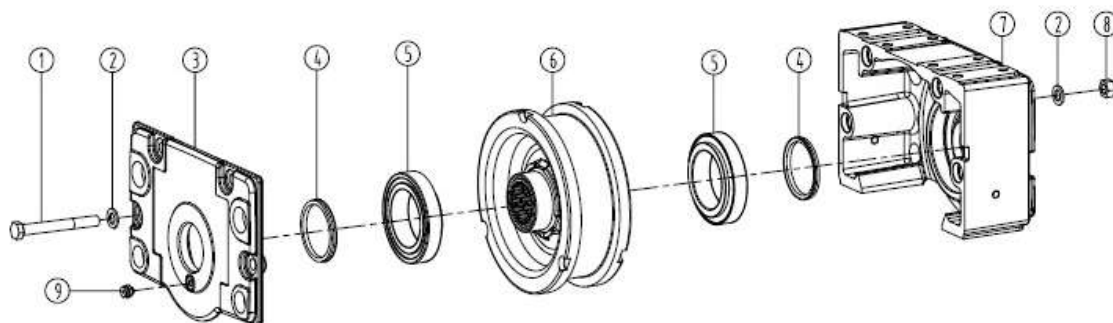
HWS112-HWS200



Type	① Screw	② Box	③ Bearing	④ Wheel	⑤ Box cover	⑥ Nut	⑦ Lock nut	⑧ Sliding nut
HWS112	22.13.111	12.12.101	21.11.106	/	12.12.102	22.15.105	22.21.105	12.12.141
HWS125	22.13.111	12.13.101	21.11.102	/	12.13.102	22.15.105	22.21.105	12.13.141
HWS160	22.13.112	12.14.101	21.11.103	/	12.14.102	22.15.106	22.21.104	12.14.141
HWS200	22.13.113	12.15.101	21.11.104	/	12.15.102	22.15.106	22.21.104	12.15.141

④ Wheel type see P4-P7

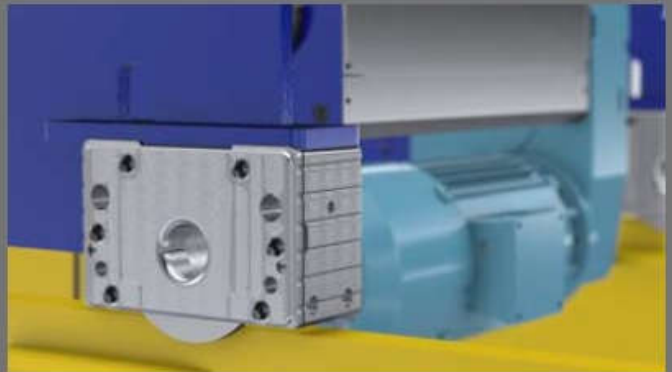
HWS250-HWS500



Type	① Screw	② Washer	③ Box cover	④ Sealing ring	⑤ Bearing	⑥ Wheel	⑦ Box	⑧ Nut	⑨ Grease nip
HWS250	22.14.101	22.20.106	12.16.103	23.11.101	21.11.201	/	12.16.101	22.15.101	23.13.102
HWS315	22.14.102	22.20.106	12.17.103	23.11.102	21.11.202	/	12.17.101	22.15.101	23.13.102
HWS400	22.14.103	22.20.107	12.18.103	23.11.103	21.11.203	/	12.18.101	22.15.102	23.13.102
HWS500	22.14.104	22.20.108	12.19.103	23.11.104	21.11.204	/	12.19.101	22.15.103	23.13.102

⑥ Wheel type see P8-P11

Engineering Case



LIGHT MODULAR
MORE EFFICIENT