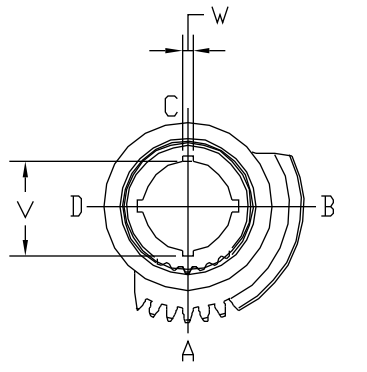
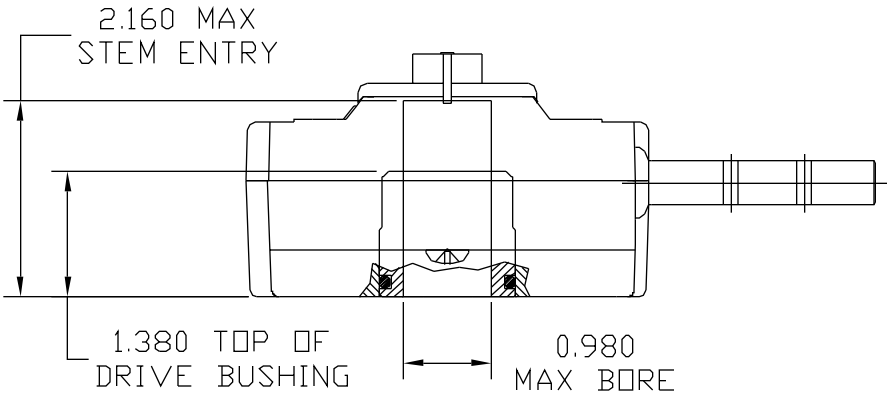
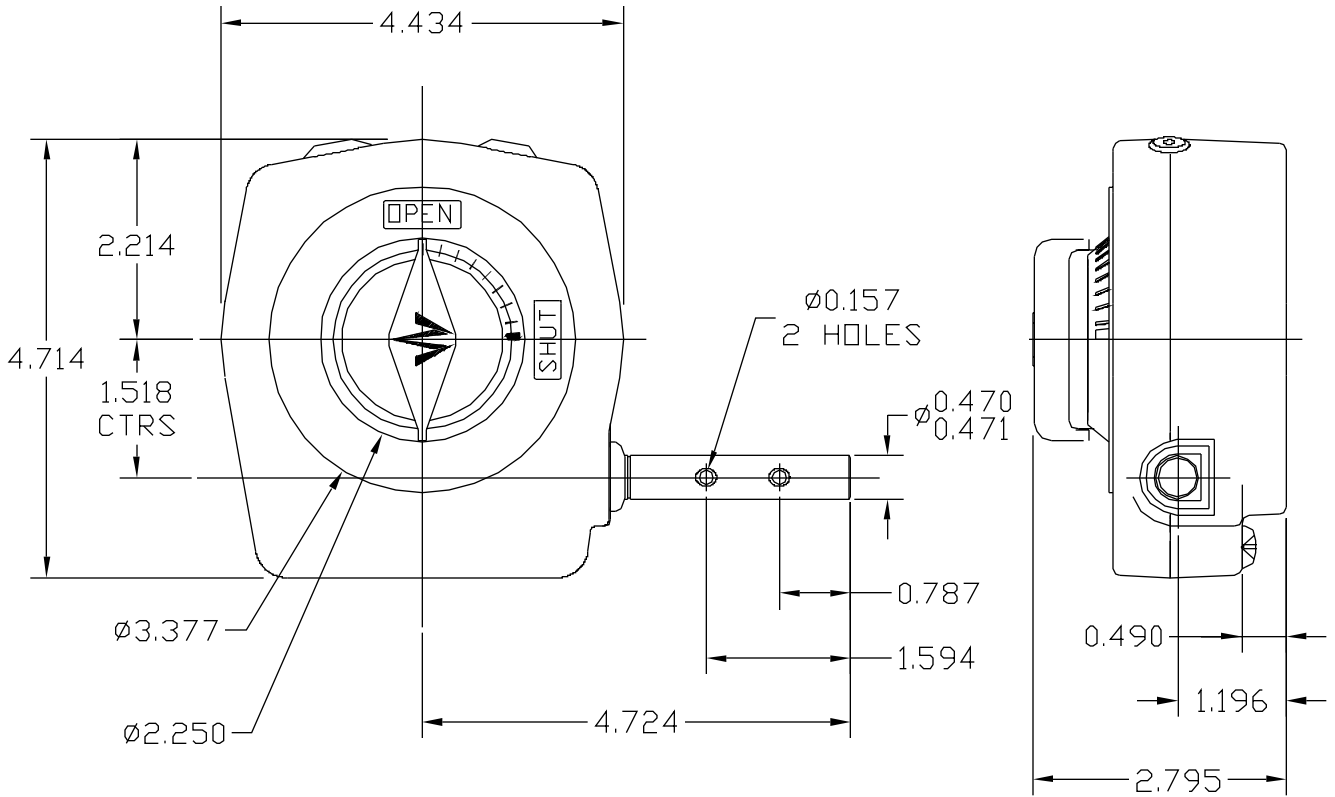


# ACTUATOR: 9801

# SLO39



**OUTPUT KEYWAY DETAILS**  
(SHOWN IN OPEN POSITION)

**GENERAL INFORMATION**

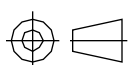
|                                 |   |
|---------------------------------|---|
| TRAVEL.....90° ±5° AT BOTH ENDS | MAX. OUTPUT TORQUE (1000 CYCLES)....2400 IN-LBS |
| RATIO.....40:1                  | MAX. OUTPUT TORQUE (2000 CYCLES)....2000 IN-LBS |
| URNS TO CLOSE.....10            | MAX. INPUT TORQUE (1000 CYCLES).....218 IN-LBS  |
| MECHANICAL ADVANTAGE...11 ±10%  | MAX INPUT TORQUE (2000 CYCLES).....182 IN-LBS   |

MOUNTING HOLE DETAIL: PREFERRED...FA10 (4 × 3/8-16 DN 4.00 BCD)  
 (MSS SP-101)                      MAXIMUM.....FA10  
    MINIMUM.....FA05 (4 × 1/4-20 DN 2.00 BCD)

APPROXIMATE WEIGHT.....3.5 LB



**MASTERGEAR**  
 VL MOTION SYSTEMS INC.  
 WWW.MASTERGEAR.CA



DIMENSIONS  
 IN  
 INCHES

SCALE  
 1:2

DRAWING  
 No.  
 9801

THIS PRINT IS CONFIDENTIAL AND IS THE PROPERTY OF MASTERGEAR. THIS PRINT SHALL NOT BE USED, COPIED OR REPRODUCED IN WHOLE OR IN PART NOR SHALL THE CONTENTS BE REVEALED IN ANY MANNER TO ANYONE UNLESS WRITTEN PERMISSION IS OBTAINED FROM MASTERGEAR.



NJC

REV. A  
 4/14/05